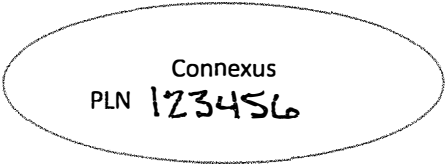


Pole Attachment Data Sheet

Pole Number 123456
 Number in Sequence: #1
 Backspan Length: 250 Ft
 Pole Height:
 30' 35' 40' 45' 50' 55' 60'
 Pole Class:
 1 2 3 4 5 6 7
 Neutral Attachment Height: 30' 6"



At Midspan: 24' 2"
 In Backspan: 25' 0"

What is the lowest electrical equipment or device on pole?

Transformer Capacitor Regulator Recloser Check box if equipment is 3 Phase

Lowest point of Connexus equipment or wire: 27' 0"

Street light attachment height (if applicable): N/A

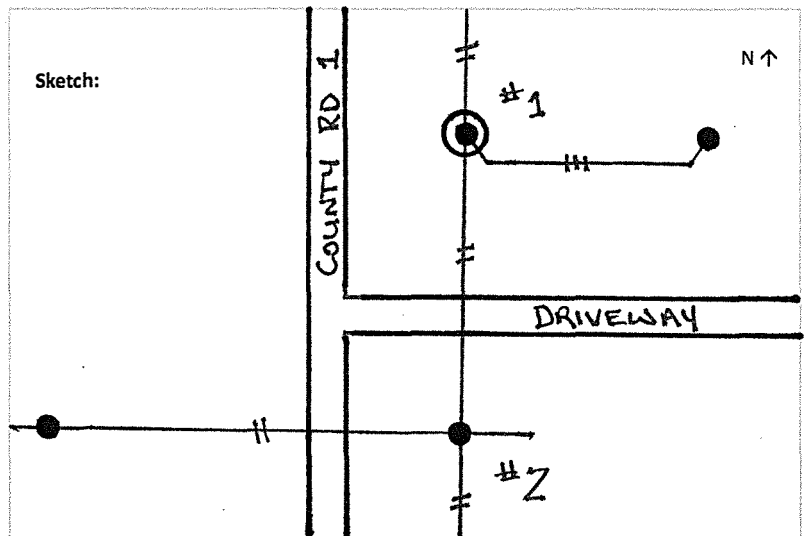
Be sure to obtain measurement from equipment above ST-LT also; such as service devis, drip loop, or bottom of transformer

Existing Communications

1: COX COMMUNICATIONS
 Attachment Height: 23' 8" At Midspan: 18' 0"
 2: N/A
 Attachment Height: _____ At Midspan: _____

Notes:

MEASUREMENT FOR LOWEST
WIRE IS FROM TRIPLEX
DRIP LOOP.



Submit Data Sheet(s) along with the Application to:

Connexus Energy, Attn: Engineering Service Specialist, 14601 Ramsey Blvd., Ramsey, MN 55303 or email: engineering.services@connexusenergy.com